

TG NAVECDIS

TG NAVECDIS is an established Electronic Chart Display and Information System, incorporating the input of many navigators into its design over more than ten years.

Now updated to the revised performance standards (MSC232 (82)), TG NAVECDIS meets not only the latest ECDIS specification, but also the requirements of navigators who use it on a daily basis. It is logical to use within a familiar MS Windows environment and the design ensures that additional features do not distract the user from core navigation tasks.



Key Benefits:

- Excellent route planning and detailed passage plan documentation
- Remote Diagnostics feature for rapid and low-cost support
- Up-to-date chart installation and updating processes
- Option for radar video overlay
- Modular design for easy installation
- ECDIS training modules with on-line assessment coming soon

Real-time route monitoring

TG NAVECDIS automatically displays primary and secondary ship position and provides the navigator with vital voyage information including:

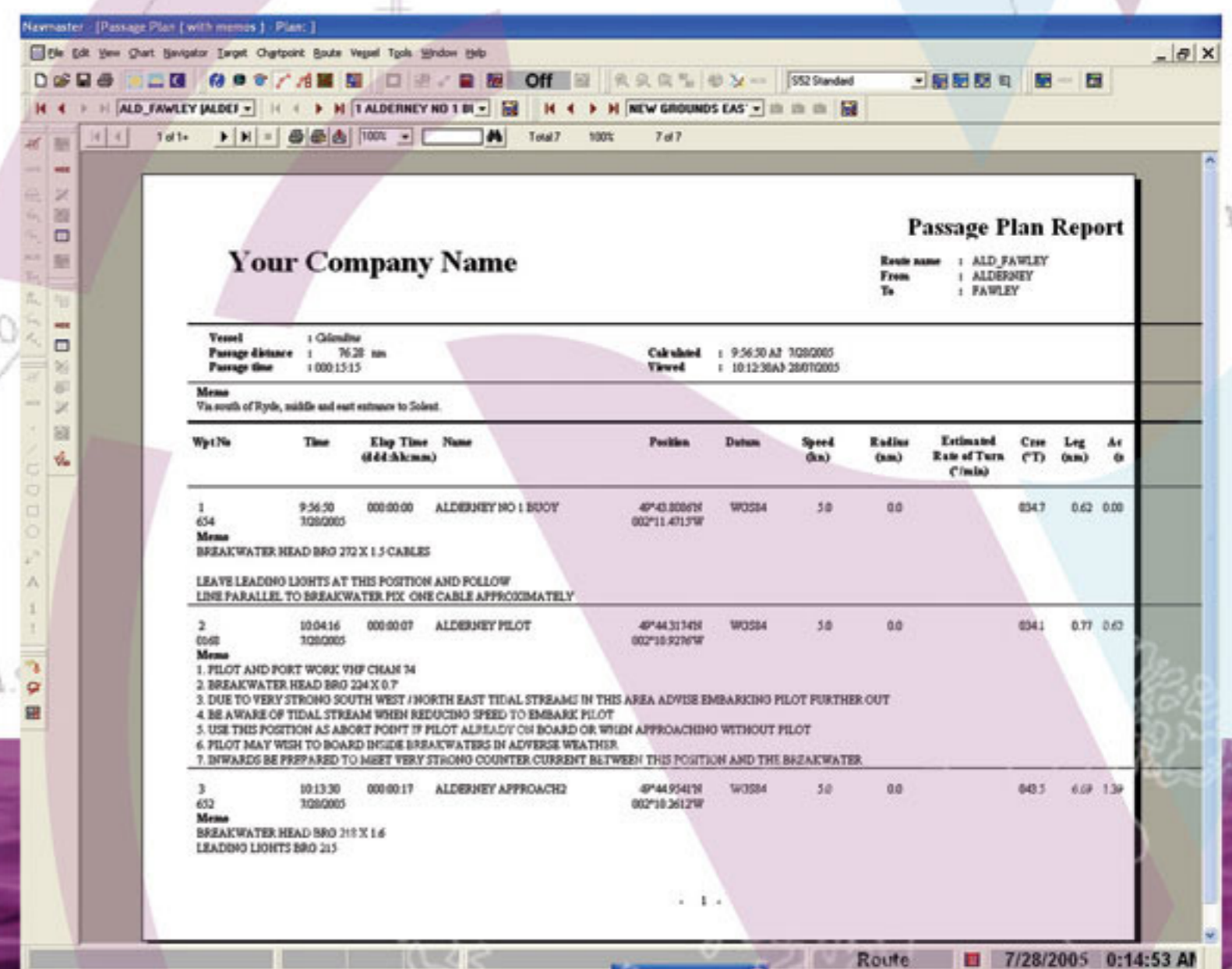
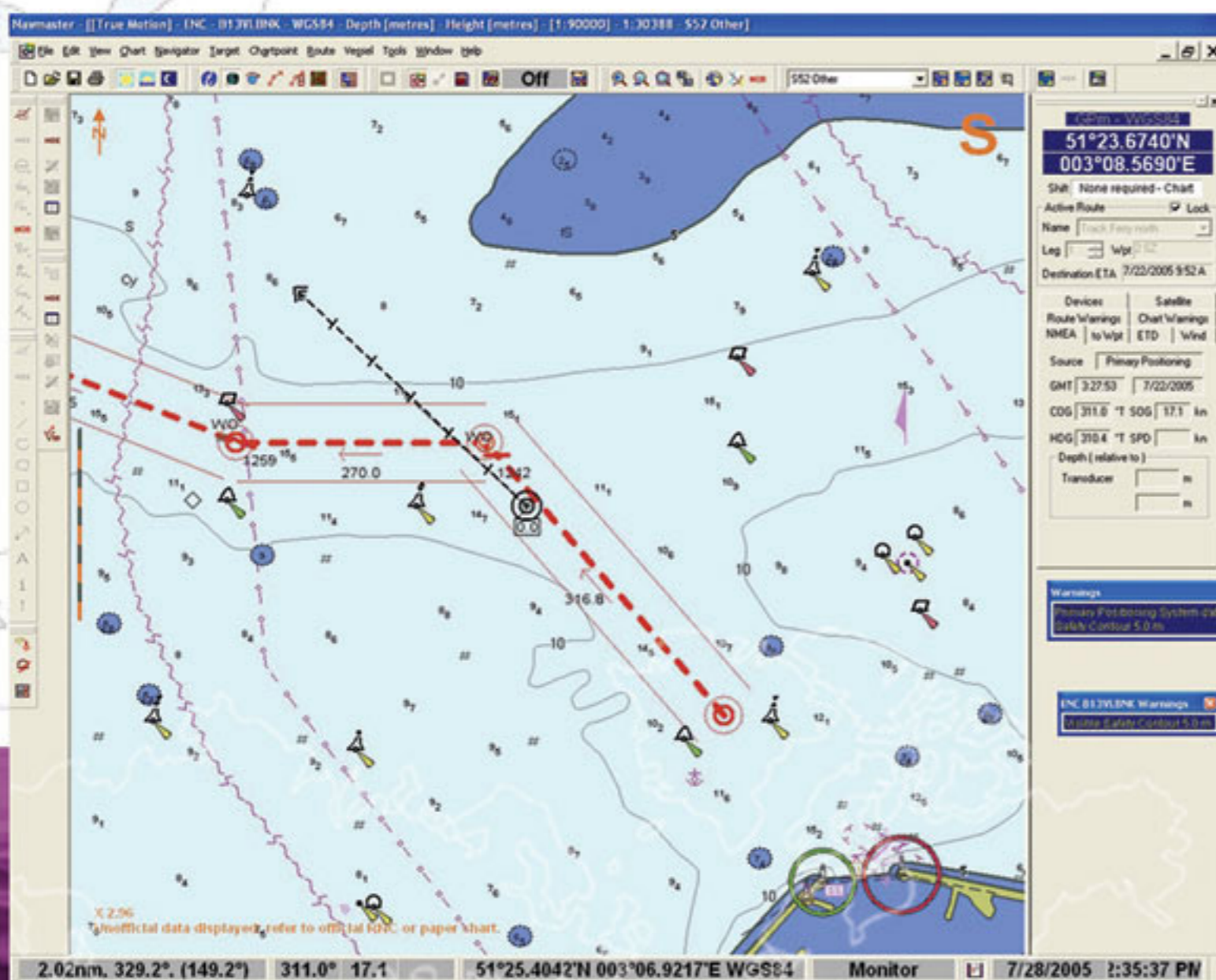
- ARPA & AIS target information
- Information from interfaced sensors
- Heading indicator
- Scaled ship outline to aid berthing
- Warnings and alarms such as safety contours, off-track, wheelover, critical point, chart status, interfaced sensor alarms, system integrity etc
- Automatic logbook, with manual entry option
- TotalTide integration for worldwide tidal data

Berth-to-berth route planning

The organisation and structure of TG NAVECDIS route planning is unique amongst ECDIS systems and superior to the normal standard.

The resulting passage plan documentation can be used to conform to the ISM Code and company quality requirements.

- Separate databases for waypoints and routes, to make planning informative and much more efficient
- Notes can be stored against each waypoint, and will be transferred into any routes which utilise that waypoint
- The detailed passage plan documentation incorporates the navigator's instructions and notes
- The plan report can be customised with a company logo and name
- Routes can be exported/shared with other vessels in the fleet
- Passage plans can be exported and emailed to head offices and third parties



ARPA & AIS information and overlays

ARPA targets are continuously monitored by TG NAVECDIS with additional data displayed in the side panel.

- Unlimited ARPA targets tracked
- Automatic storage of target data (with optional VDR module)
- Frequently used commands quickly accessible from toolbar
- Go-To-Target button for rapid view if target is not on the current chart

Interface with AIS

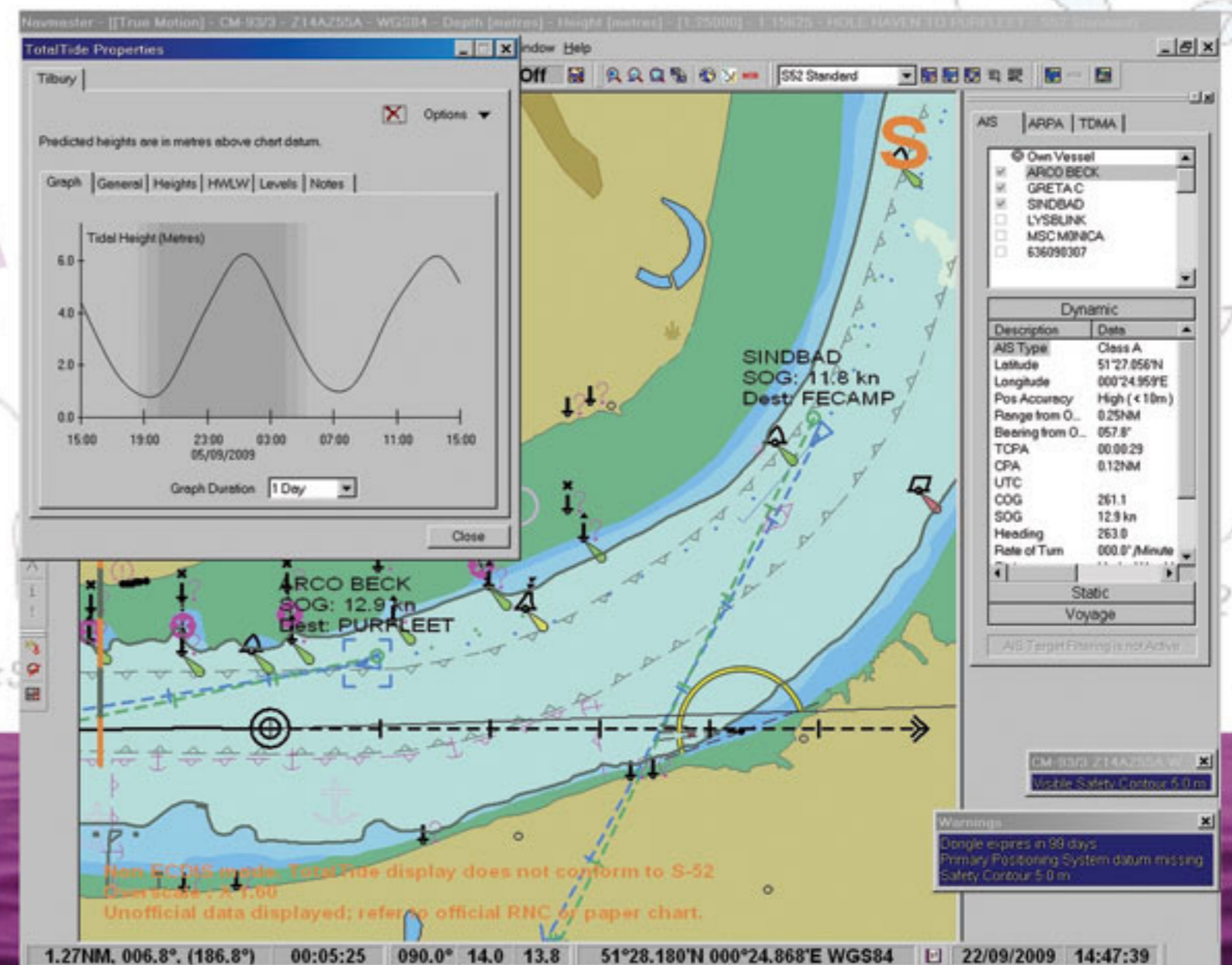
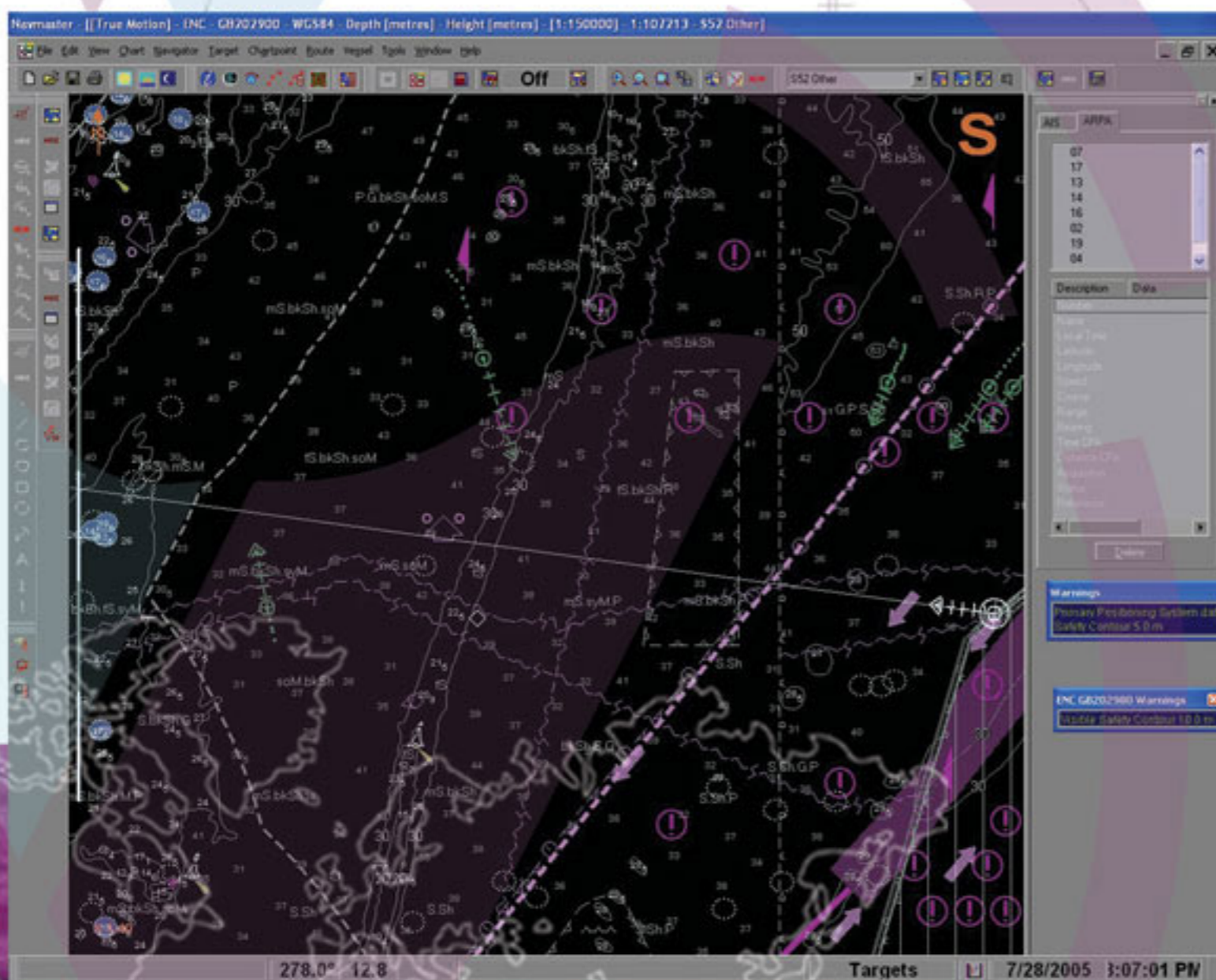
When combined with ARPA, AIS provides the navigator with a comprehensive presentation of the traffic situation.

- Unlimited target display
- Information filtered between Static, Dynamic and Voyage data
- Quick View button to display selected text labels for user-defined time period
- All targets accessible in side panel
- Targets displayed in latest IHO symbology
- Enables easy upload of own ship voyage information to AIS

Voyage data recording and playback

A very useful addition to ECDIS for vessels not required to carry type approved VDR, this feature automatically captures all own and other vessel data without crew action, stores the data compressed and encrypted in archives and enables voyages to be reconstructed from the playback function.

It provides vital evidence in the event of incident or damage and has assisted customers in resolving insurance claims. For the data to be replayed on another PC, an office-based NAVECDIS installation is required.



Modular hardware

All components of the hardware have been type approved individually and as part of the TG NAV ECDIS. Modular components offer greater installation and maintenance flexibility and allow customers a degree of choice. The PC processor can be stored in under-counter housing with TFT display, keyboard and trackball at the conning position. Alternatively all components can be built into integrated bridge consoles. The display could be upgraded to a larger size for just the cost of the display or the PC components could be upgraded later to accommodate future ECDIS developments.

In the event of faults, individual components can be isolated and removed/replaced, allowing the ECDIS to continue functioning with a substitute component until maintenance is complete.

Aftercare and service

Thomas Gunn Navigation Services aim is to provide customers with first class support. Although often not considered at initial purchase, experience has shown that the quality of subsequent support and maintenance are very important to customers and can significantly reduce running costs.

- Remote Diagnostics function in TG NAV ECDIS for fast, efficient problem solving using email (engineer visits are rarely necessary)
- Knowledgeable TGNS staff available to give personal support.
- Practical Type Training available onboard ship or at a shore-based location
- TG NAV ECDIS Type Training modules with on-line assessment coming soon
- Upgrade and Support contract provides unlimited technical support by phone or email and automatic issue of upgrades, to allow for expected changes in electronic chart delivery mechanisms over the next few years and for further regulatory changes as they occur

**Other hardware components are available.
Please contact us for more details.**



Intel Core2Duo 2.13GHz, 512Mb RAM, 160 Gb vibration-proof hard drive. Certified to IEC60945 and IACS E10. Brackets are available for horizontal, vertical and 19" rack mounting. Measures 420 x 132 x 380mm. Weight 11 Kg.



20.1" TFT monitor (larger displays also available) with excellent brightness and contrast levels and direct dimming control. Certified to IEC60945, IEC61174 and IACS E10. Can be panel-mounted or supplied with protective aluminium casing and brackets for desktop, deck-head or wall mounting. Measures 534 x 481 x 223.5mm. Weight 18 Kg.

Compatible Chart Services



